



3. PERSONAL ITEMS

Included with this notice is the list of Booklist/Stationery Items your child will require for personal use in 2020. These personal items are to be supplied by parents.

Supplies can be purchased through the suggested supplier or a supplier of your own choice. **Please be aware that Ziggies Educational Supplies rebate is approximately 20% of booklist collections back to the school.**

If you wish *Ziggies Educational Supplies* to supply your child's requirements please return completed booklists to the school by Wednesday 22th November 2019. (Payment not required at this stage.)

Collection day for Pre Ordered Booklists/Stationery will be on Tuesday 28th January between 8.30am – 9.30am in the Undercover Area.

Payment will be necessary upon collection via credit card facility supplied by Ziggies Educational Supplies or cash. **(No cheques accepted on the day, these must accompany initial order).**

If you are unable to collect your Pre Ordered Booklists/Stationery items on Tuesday 28 January, then they will be available for collection from the School Office during normal school hours. If not participating in the bulk order scheme, please make payments of Voluntary Contributions at the School Office. All payments should be made prior to 27th March 2020.

OTHER ITEMS

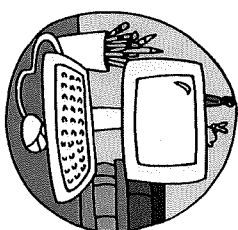
These may relate to optional fund-raising activities such as *Jeans for Genes* day or Daniel Morcombe Day etc. Participation in the fund-raising aspect of these activities is optional and therefore no amount can be specified.

Thank you for your support
Yangebup Primary School

Monday 11th November 2019



**VOLUNTARY CONTRIBUTIONS, CHARGES
and PERSONAL ITEMS 2020**



Dear Parents,

Financial support by parents has always played a significant role in providing resources that extend the school's capacity to add value to the learning experiences of students. The continuing partnership between schools and parents is vital to ensuring that all students receive a level of education sufficient to carry them forward in today's society.

The Yangebup Primary School Council has endorsed the schedule of Contributions, Personal items and Additional Costs for 2020. The schedule is broken into three sections which will allow you to ascertain costs for the year.

Parents are entitled to a refund of any unused portion of the contributions they have paid if their child transfers to another school prior to the end of the school year. This information will be available from the Business Manager Corporate Services.

Payment of Voluntary Contributions can be incorporated in your booklist charge on the day of the booklist collection, Tuesday 28th January 2020 between 8.30am – 9.30am in the Undercover Area.

OR

Paid directly at the school office via cheque or cash. Sorry **No eftpos facilities available at School**. Direct Debit details available on request.

All Voluntary Contributions should be paid by 27th March 2020

Voluntary Contributions and Other Charges 2020

Definition	Amount
<p>1. CONTRIBUTIONS</p> <p>The total amount of voluntary contributions parents and carers are being asked to pay has been contained within the \$50 maximum set in the School Education Act and Regulations 2000.</p> <p>Contributions are voluntary; however the quality of our teaching and learning programs will be maximized when each family makes a contribution to supplement funding gained from other sources, including the State and Commonwealth Governments.</p> <p>Contributions collected at this school contribute to items for each student including:</p> <ul style="list-style-type: none"> • Reading Books • Library Books • Art/Craft Materials • Maths Resource Materials • STEAM Materials • Science Consumables • HASS Resources • Physical Education/Sport • Photocopy paper • USB drives and Ink Cartridges • Materials and resources to support student activities in the 8 learning areas. • Online Mathematics program <p>ADDITIONAL REQUESTS Chaplain Voluntary Contribution per family Religious Education Optional other cost per child</p> <p>2. OTHER CHARGES</p> <p>These costs are associated with specific learning activities available to all students, but conditional on a payment being made at the time of the excursion or incursion.</p> <p>Primary Schools today have an obligation to provide a quality education for all students from K to Year 6.</p>	<p>YEARS</p> <p>K -6</p> <p>\$60.00 PER CHILD</p> <p>This comprises: Literacy \$10 Mathematics \$10 Science \$5 HASS \$5 T & E \$5 PE & Health \$5 The Arts \$10 IT \$10</p> <p>K - 6 \$12.00 Yrs 1-6 \$ 8</p>



Maximum School Contributions and Charges per child for 2020

	K	PP	Yr 1	Yr 2	Yr 3	Yr 4	Yr 5	Yr 6
Voluntary School Contribution	\$60	\$60	\$60	\$60	\$60	\$60	\$60	\$60
Additional Requests								
Chaplain per family	\$12	\$12	\$12	\$12	\$12	\$12	\$12	\$12
Religious Education per student	\$8	\$8	\$8	\$8	\$8	\$8	\$8	\$8
Total Voluntary Contributions	\$72	\$72	\$80	\$80	\$80	\$80	\$80	\$80

Your Voluntary Contribution is essential to partially fund the total expenses per student. Other sources of funds to support the budget are the School Grant and, at times, specific P & C contributions through fund-raising efforts.

OTHER CHARGES	K	PP	Yr 1	Yr 2	Yr 3	Yr 4	Yr 5	Yr 6
Nelson Maths Workbook - if NOT purchased through booklist program			\$16	\$16	\$16	\$16	\$16	\$16
Class Incursions/Excursions (including behavior reward Activities)	\$70	\$70	\$70	\$70	\$110	\$110	\$110	\$110
Leadership Day								\$60
Sports Carnivals					\$35	\$55	\$55	\$55
Interim Swimming Lessons	\$70	\$70	\$70	\$70	\$70	\$70	\$70	\$70
Classroom Activities	\$25	\$25	\$15	\$15	\$15	\$15	\$15	\$15
Eg. Cooking								
SIMS Music Program							\$0	\$0
PEAC Courses							\$300	\$300
- From \$15 to \$110 per course							Max	Max
Graduation Package (inc. Dancing Lessons)								\$70
Graduating Class Shirts (each)								\$40

Please note that the amounts indicated on the schedule represent the maximum that could be charged for scheduled activities in 2020

